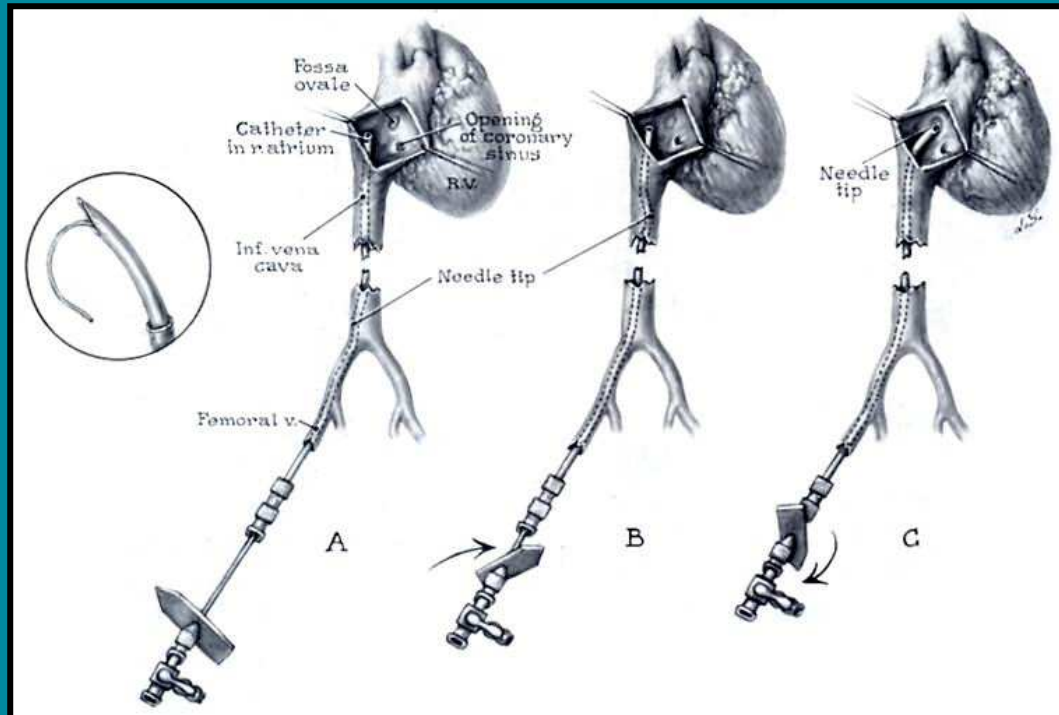


Section 5

Transseptal left heart catheterization: trajectory of a method

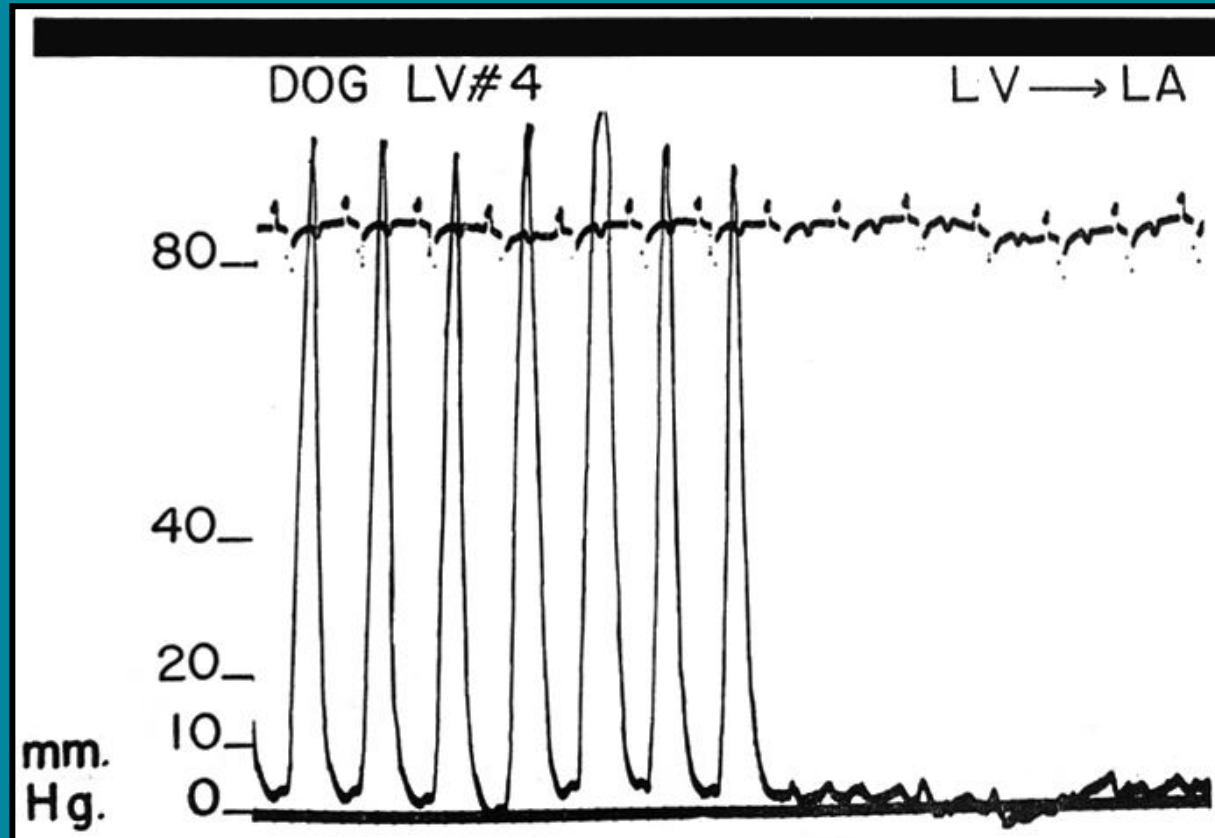
John Ross Jr

Transseptal left heart catheterization: trajectory of a method



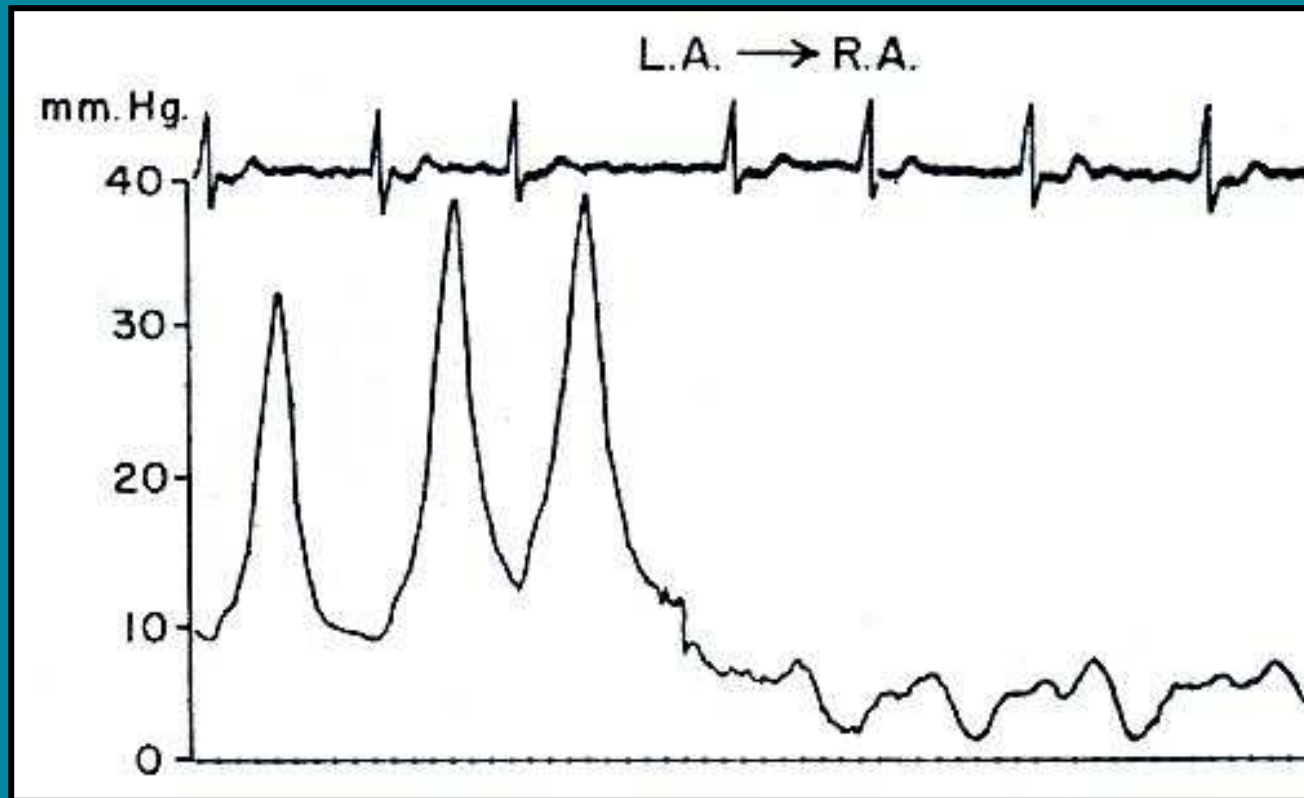
Technique for inserting the transseptal needle into a Cournand catheter positioned in the right atrium

Transseptal left heart catheterization: trajectory of a method



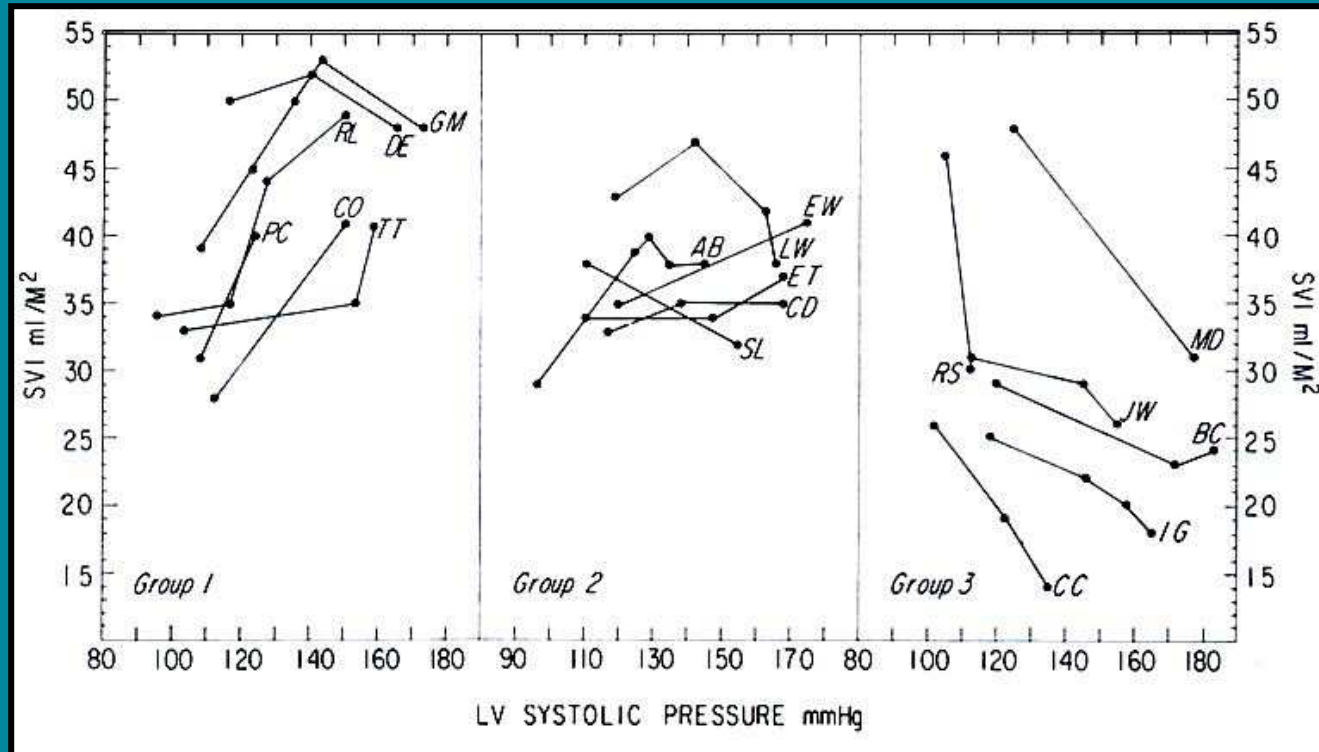
Pressure tracings obtained during transseptal catheterization in a normal dog as the small vinyl plastic catheter was pulled back from left ventricle into left atrium

Transseptal left heart catheterization: trajectory of a method



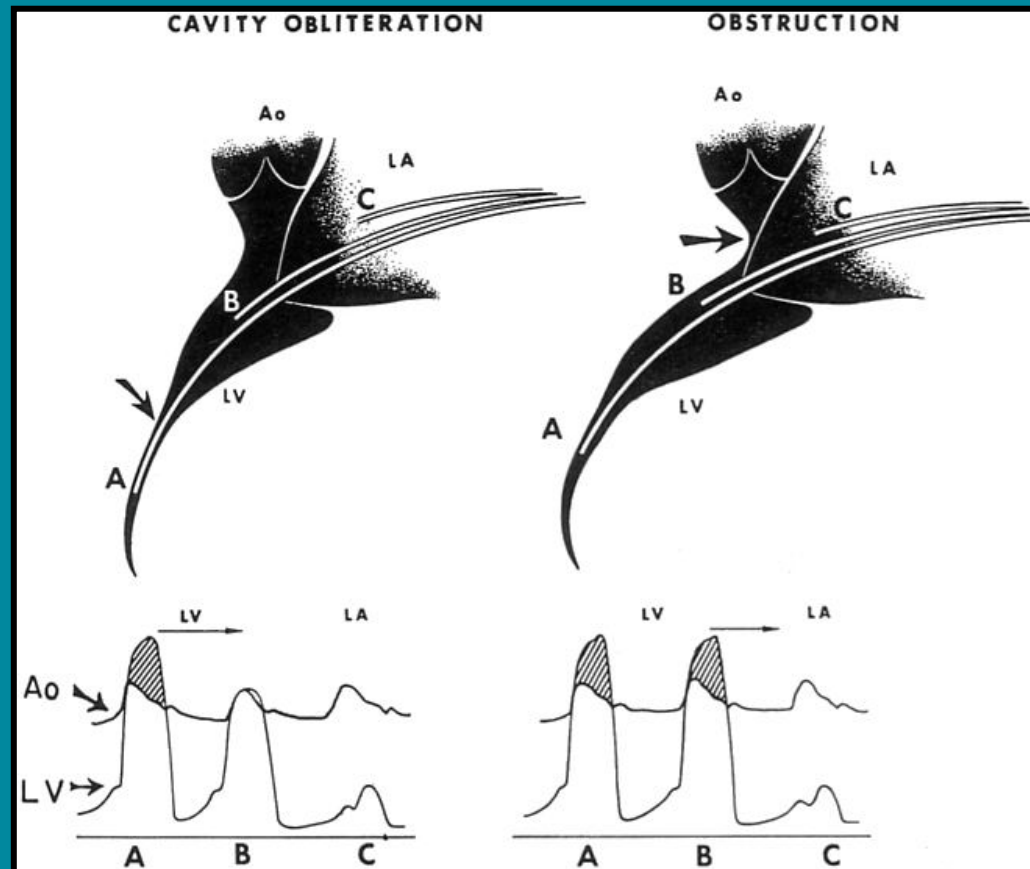
Pressure tracing obtained as the transseptal needle was withdrawn from the left atrium (L.A.) across the interatrial septum into the right atrium (R.A.) in a patient with severe mitral regurgitation, the first individual studied by this method

Transseptal left heart catheterization: trajectory of a method



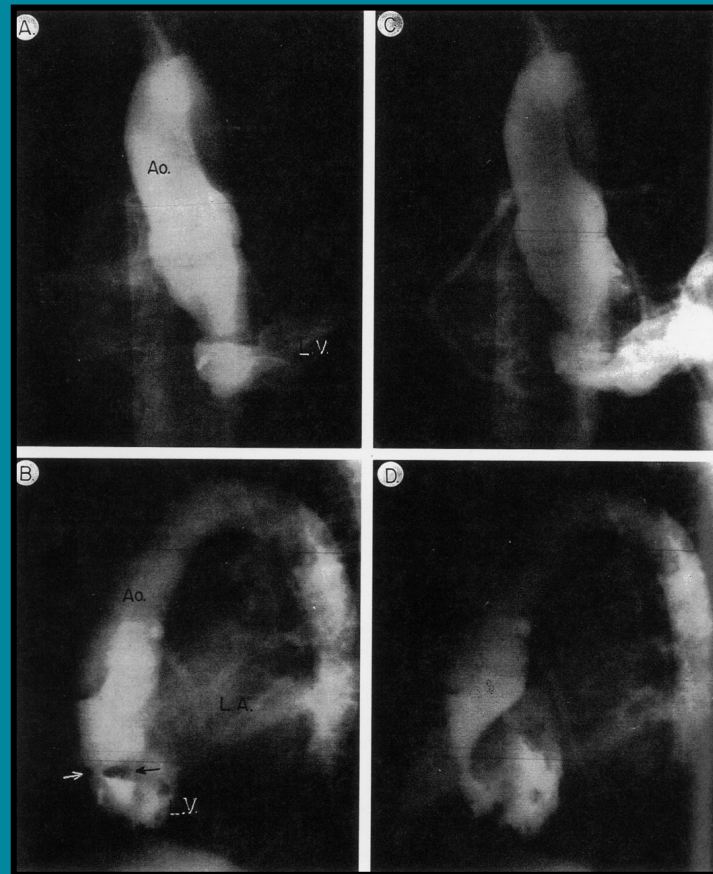
Relationship between the stroke volume index (SVI, in ml/m² BSA) and left ventricular systolic pressure before and during increasing rates of angiotensin infusion in patients having no left ventricular dysfunction (Group 1), mild (Group 2), and severe dysfunction (Group 3)

Transseptal left heart catheterization: trajectory of a method



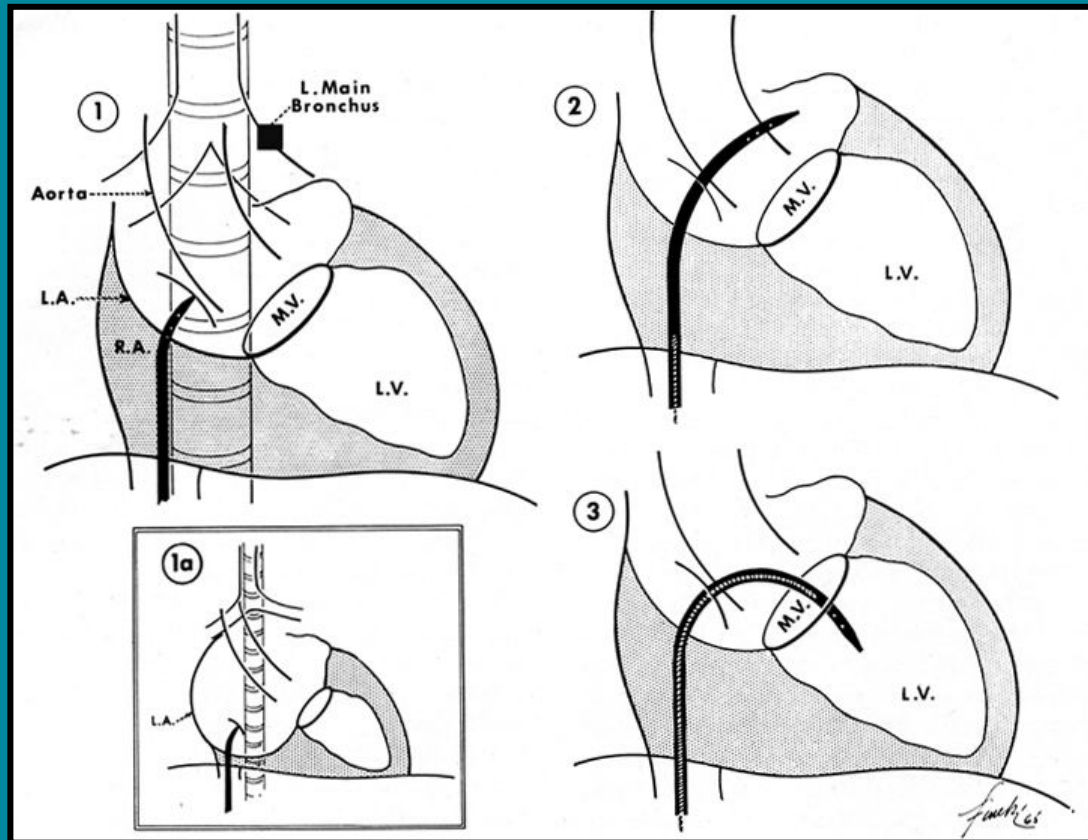
Schematic representations of the shape of the left ventricular cavity and the intracardiac pressures in relation to the concepts of cavity obliteration versus obstruction to left ventricular ejection in hypertrophic cardiomyopathy

Transseptal left heart catheterization: trajectory of a method



Angiograms showing obstruction in a patient with familial hypertrophic cardiomyopathy

Transseptal left heart catheterization: trajectory of a method



Position of landmarks and transseptal catheter with contained needle against the interatrial septum prior to transseptal puncture in patients with normal or slightly enlarged left atrium (1) and with greatly enlarged left atrium (1a). (2) Catheter in left atrium. (3) Position of catheter and stylet as catheter is directed across mitral valve